

ACSE K- Mount operational Manual

Please read this manual carefully before you use or operate the ACSE K-Mount to avoid the risk of injury or damage. ACSE GmbH Is not in charge for any accidents or damages , caused by the use or abuse of the K- Mount mounting system. The operator must always Be fully aware of proper installation and technical correct usage in the limitations of the system. All contents are subject to unnoticed changes without prior notification.

Safety instructions	Page 2 – 3
Changing the mounting direction	Page 4
Measurements	Page 5
Changing spring	Page 6 - 8
Different Mounting options	Page 9 - 11
Generations	Page 12

Safety Instruction

Danger!

Read all safety regulations and instructions. Any errors made in following the safety regulations and instructions may result in an electric shock, and/or serious injury and damages. Keep all safety regulations and instructions in a safe place for future use.

Additional safety instructions

Warning: When using electric tools it is imperative to take the following basic safety precautions. in order to reduce the risk of electric shock, injury and fire, read and take note of these instructions before you use this tool.



Don't open sealed parts. No user serviceable parts inside. Risk of electric shock! To be maintained by authorized personnel only.




Keep body parts out of the damping range of the K-Mount to Prevent injuries. Operate with care.



Check all screws and damper connections before installing a payload. Ensure a rigid connection of the Platform to your mounting basis!



Use lockwire on all bolts that connect to the payload.



Do not operate the product when you are tired, when your concentration is impaired, and/ or under the influence of drugs, medication or alcohol. The product shall be used only by trained persons. Non authorized persons, especially children, shall be kept away from the work area.



Before operating check all screws for looseness, check all bearings are in good condition. Check (if available) retention spring for good condition or swap it.

Only for EU countries

Do not throw power tools in household waste!

According to European Directive 2012/19 / EU on waste electrical and

electronic equipment and implementation in national law, used electrical tools must be collected separately and recycled in an environmentally sound manner.

Recycling alternative to the return request:

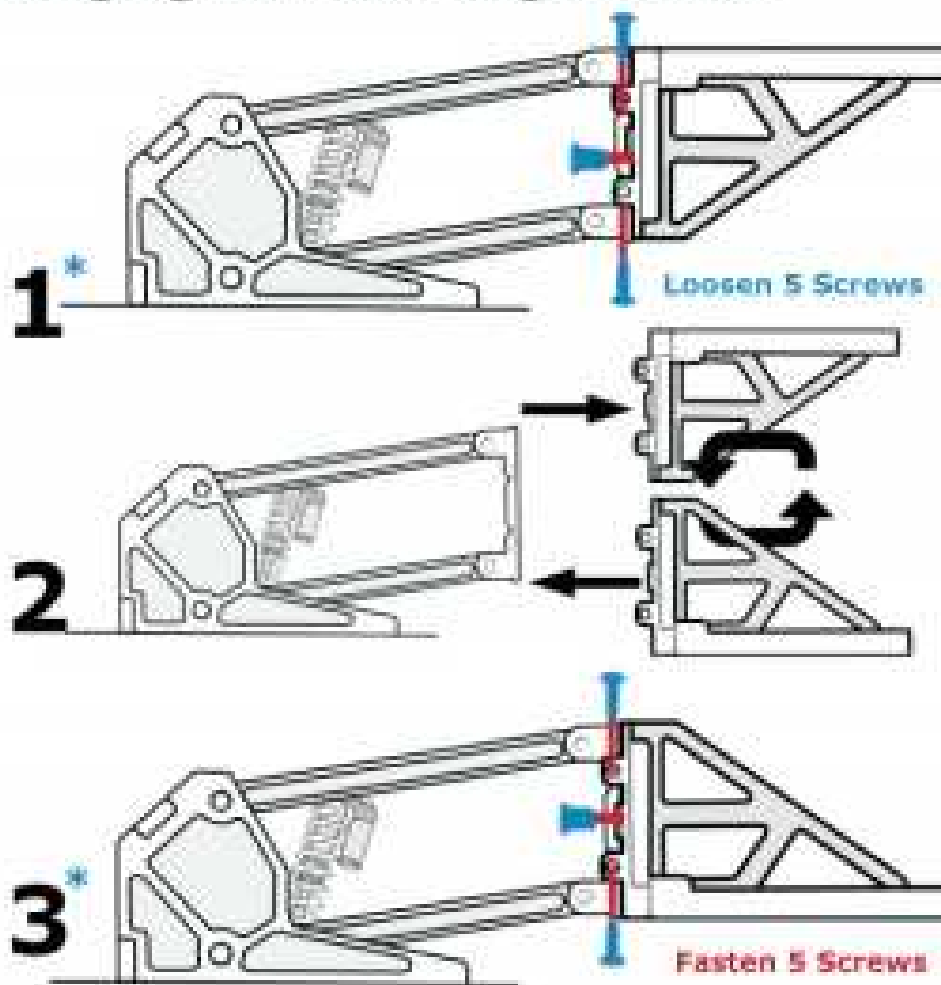
The owner of the electrical appliance is, alternatively, obliged to cooperate in the event of the proper usage of the equipment of the owner's task. The old equipment can also be handed over to a recovery center that carries out an elimination in the sense of the national recycling and waste legislation. The accessories and auxiliaries not included in the old devices are not affected by any electrical components guidelines.

The reprinting or other reproduction of any documentation and accompanying documents of the products, even parts of it, are only permitted with the expressed consent of ACSE GmbH.

Technical changes reserved.

Changing the mounting direction

Changing the mounting direction

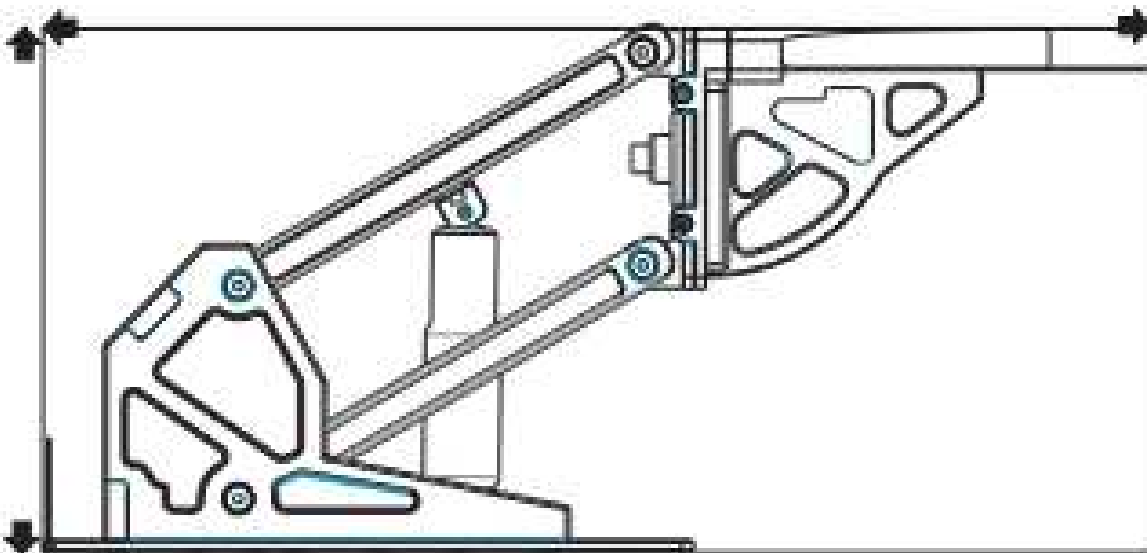
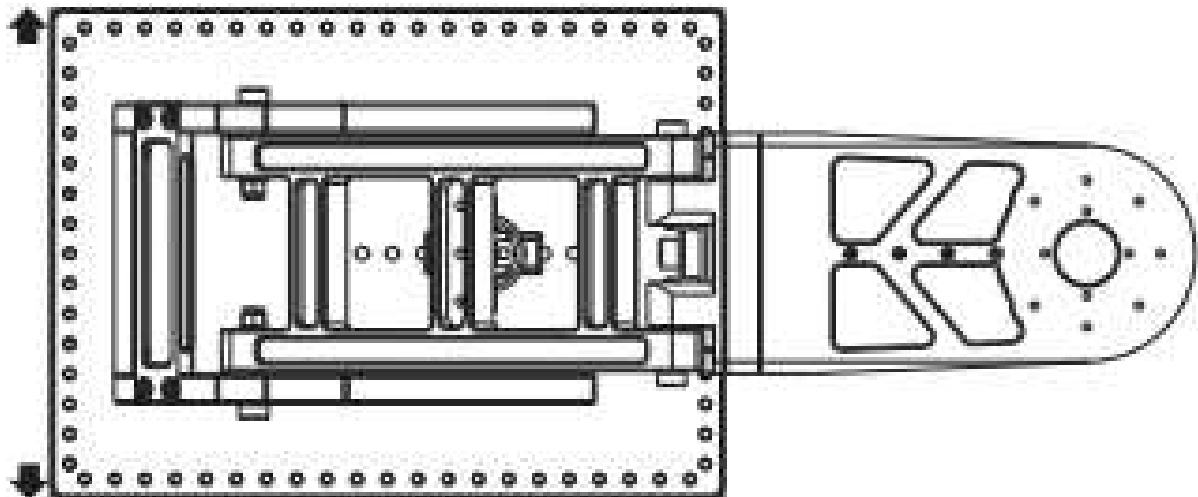


*metric 6 & 14 Hex Keys needed

Measurements

Weight: 26 kg
Dimensions: 94,5cm x 40,5cm x 44,2cm
Baseplate: 55,5cm x 40,5cm
Maximum Payload: 60kg

Maximum damper force is pending on used damper system



Changing spring on K-Mount

Needed tools:

- Allen key No.6
- Combination wrench No.13



Loosen upper screw of the damper with Allen key and combination wrench



Stick damper through the upper braces and drop down the arm carefully

!Watch your fingers!



Turn damper to loosen lower thread



**Slide damper cap backward
(if open end is in front)**



Pull out the spring



Attach the new spring onto the damper



Slide damper cap back onto spring



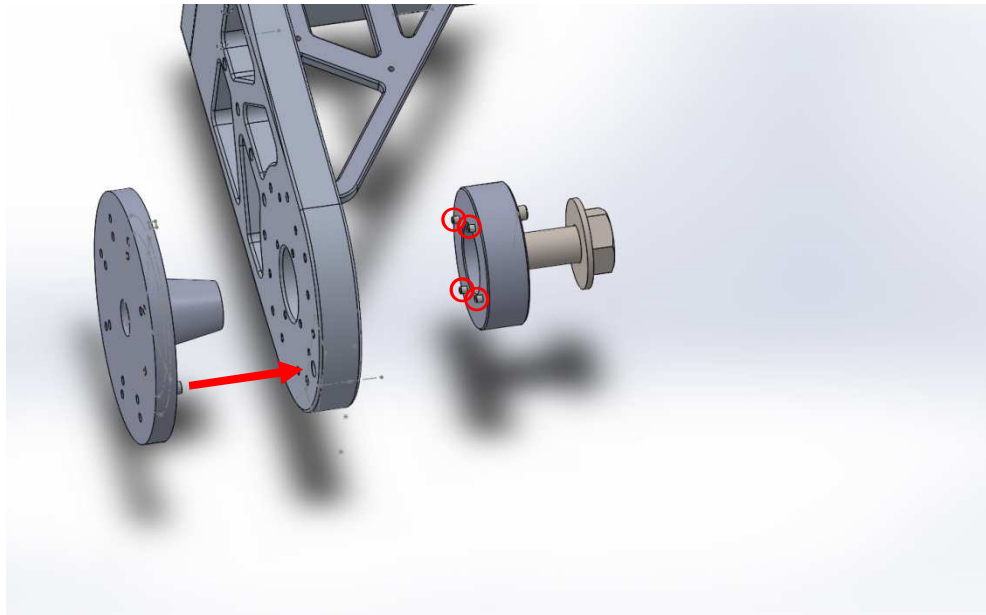
to lock lower thread

**Fix upper screw of the damper again.
Make sure the spacers are in the right
position again.**

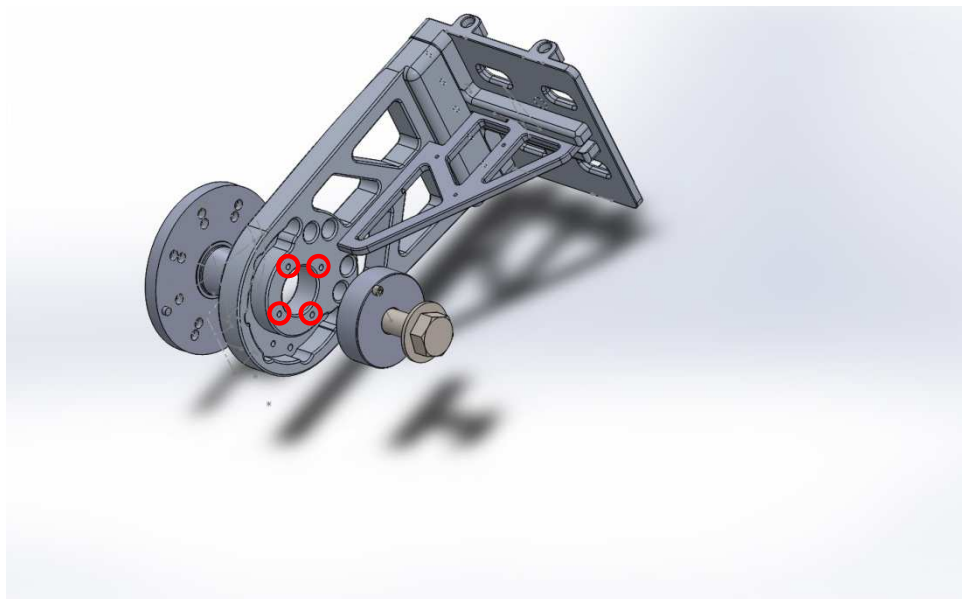


Different Mounting Options

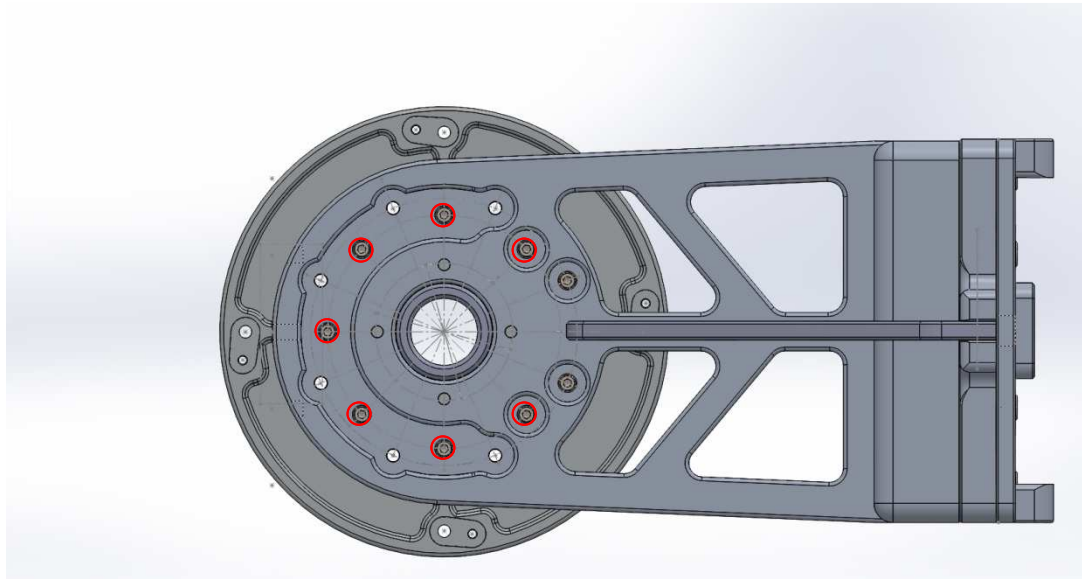
Taper Fit Mount Adaptor



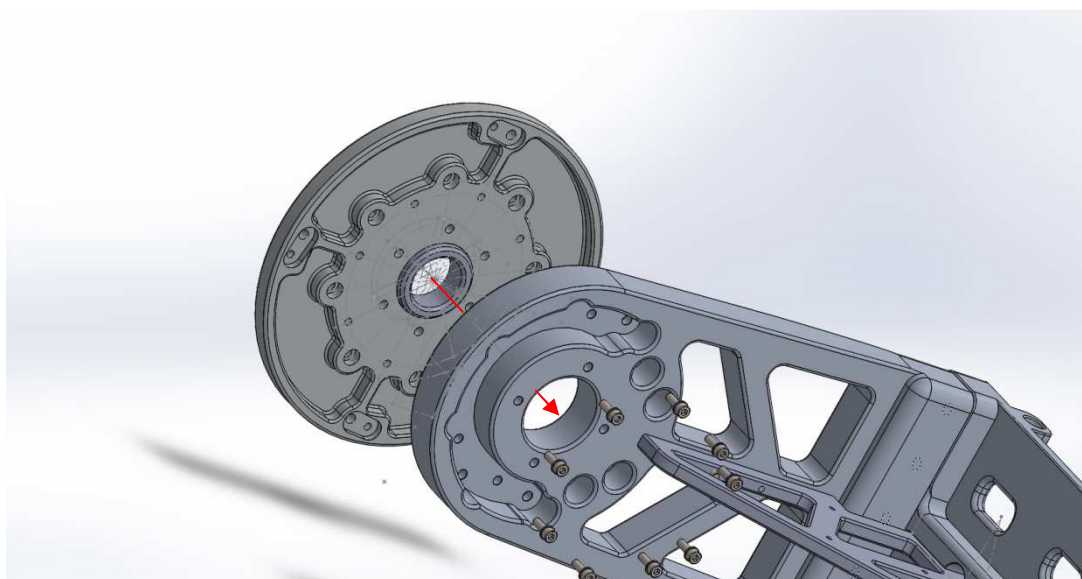
**Anti twist bolt (Arrow)
Four Orientation pins (red circled)**



Four orientation holes (circled)

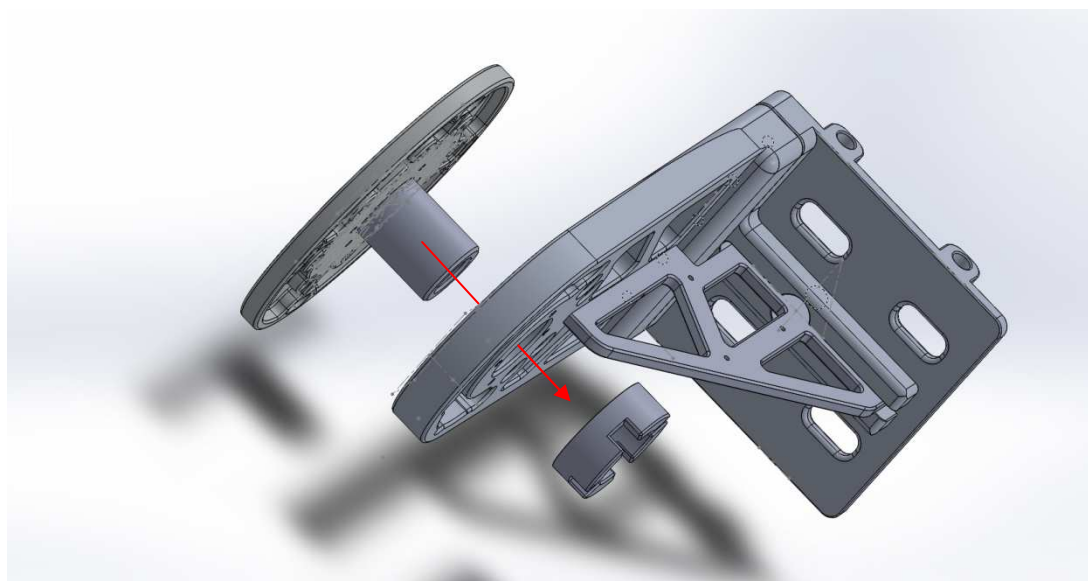
Center Piece Mount Adaptor

Use the seven marked holes for M5 x 16 philips head screws and 5 x 10 washer all stainless steel

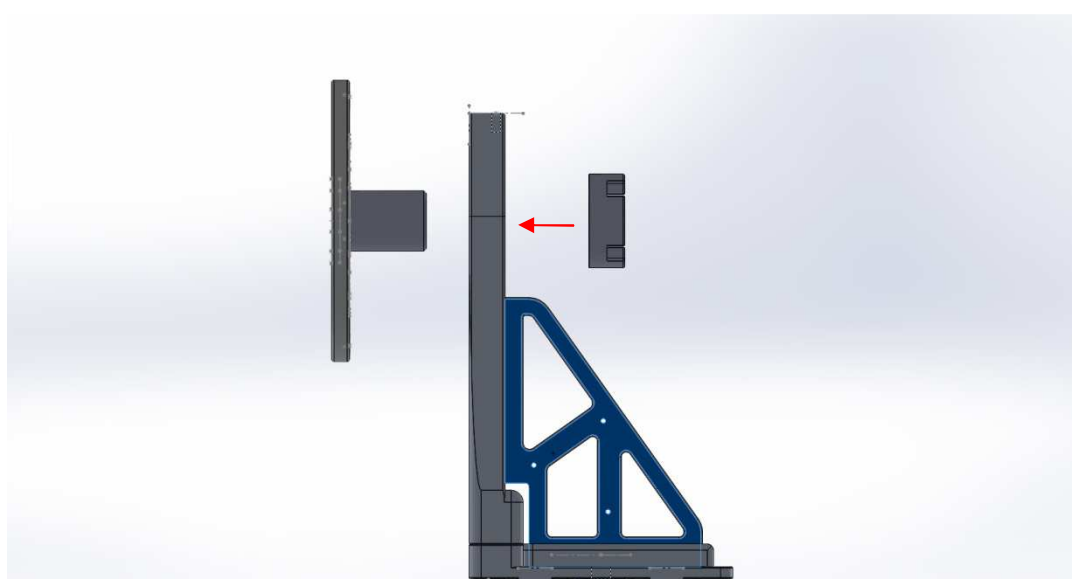


Center the plate with the insert ring and turn the adaptor plate, until your screws hit the threads. Use the torque recommended by your screw manufacturer

Center Screw Mount Adaptor



Center the plate with the insert



Then screw the counter part onto the thread

Different generations

Since the K-Mount is manufactured for more than ten years now, there are different versions on the market, which may differ in design. To keep our product future proof for all future and existing gimbal generations and manufactures, design may change at any given time without prior notice.

Every K-Mount is important to us, thats why we offer backward spare part supply down to the first generation of k-Mounts.

For further question do not hesitate to contact us:

www.acse-gmbh.de

**ACSE GmbH
Pippingerstr.108
81247 Munich
Germany**